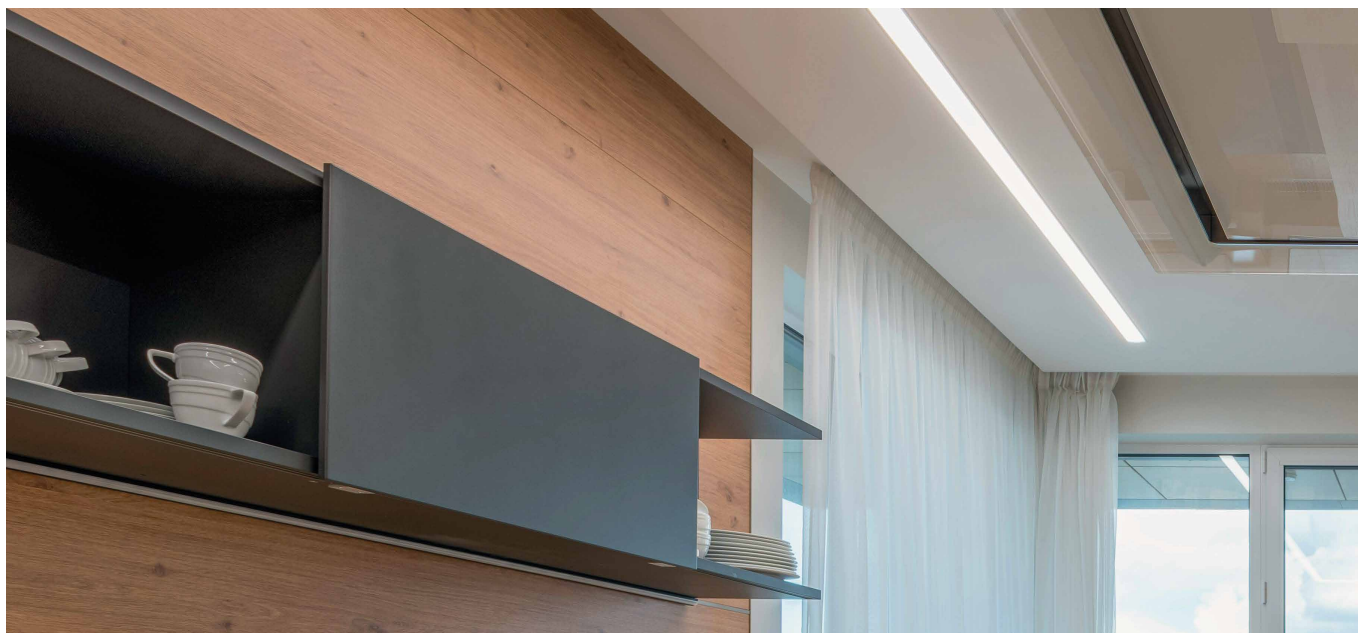


DELTA 3

D3.



Decorated anodised aluminium lamp complete with brushed or microprismatic diffuser and high-brightness LED source with a high Lumen/Watt ratio. Suitable for primary lighting for residential, retail, large-space and general lighting. Flush-mounted

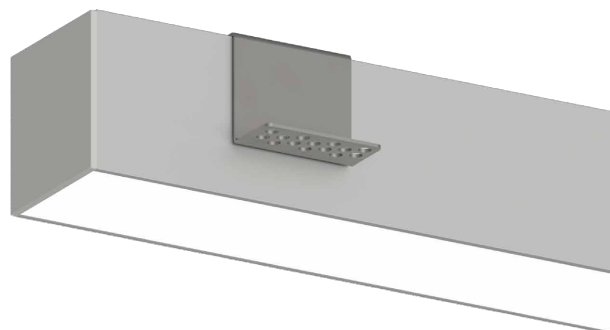
Constant 24Vdc voltage supply

Parallel connection, 50 cm cable

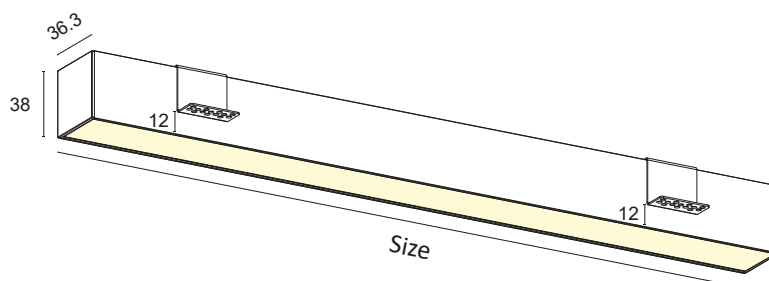
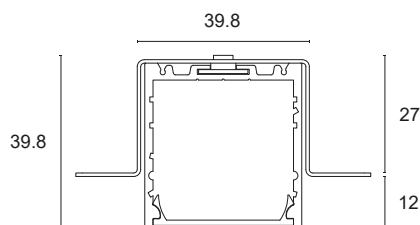
Constant voltage power supplies page 237

Dimming Accessories page 249

 **MADE IN ITALY**



Max. milling cut 39.8mm



BASIC CODES

D3.

FINISHES

- 1** White
 - 2** Matt black
 - 7** Brushed aluminium
- *Other finishes on request.

SIDE SUPPORTS

- 1** White
- 2** Matt black
- 5** Grey
- 7** Brushed aluminium

SIZE

- C** 500mm
- D** 600mm
- E** 700mm
- F** 800mm
- G** 900mm
- H** 1000mm
- I** 1200mm
- J** 1300mm
- K** 1400mm
- L** 1500mm
- M** 1800mm
- N** 2000mm
- O** 2300mm
- P** 2500mm
- Q** 2800mm
- R** 3000mm

LED COLOUR

- BN** 4000K
 - BC** 3000K
 - CC** 2700K
- *Strip also available coloured, Dynamic White, RGB and RGBW.

POWER

F	20.2W/m	2500Lm/m	168LED/m	S2835	CRI>85	
F+	20.2W/m	2500Lm/m	168LED/m	S2835	CRI>90	
G	25W/m	3500Lm/m	160LED/m	S2835	CRI>80	
L+	28W/m	3500Lm/m	160LED/m	S2835	CRI>90	
H	30W/m	4500Lm/m	240LED/m	S2835	CRI>80	
M+	40W/m	5000Lm/m	480LED/m	S2835	CRI>90	

*Energy class referring to light source

DIFFUSER

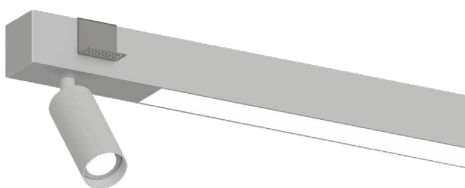
- M** MICROPRISMATIC
- S** BRUSHED

Code example:

DELTA 3 + White + Side supports white + 900mm + 3000K + 20.2W/m CRI>85 + Brushed diffuser = Code: D3.11GBCFS

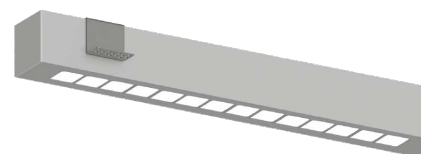
COMPLEMENTARY SYSTEMS

EXAMPLE OF DELTA FLUSH MOUNTED AND REM PROJECTOR



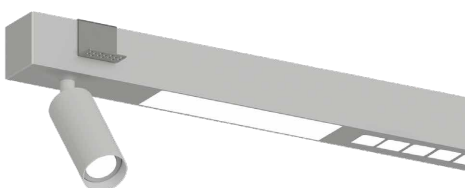
*Details on p. 276

EXAMPLE OF DELTA FLUSH MOUNTED AND DARK MODULE



*Details on p. 276

EXAMPLE OF DELTA FLUSH MOUNTED, REM AND DARK MODULE



*Details on p. 276